



**GAS-FIRED CONDENSING MOBILE HOME FURNACE  
DOWN FLOW & DIRECT VENT (SEALED COMBUSTION) FURNACE  
SPECIFICATIONS**

<b>MODEL NO.</b>	<b>CMC1-50D36 (DV3)</b>		<b>CMC1-75D36 (DV3)</b>	
HEAT INPUT RATE (BTUH)	50,000		75,000	
OUTPUT (BTUH) <sup>1</sup>	48,000		72,000	
SEASONAL EFFICIENCY <sup>2</sup>	95%		95%	
LARGEST REC A/C <sup>3</sup>	3 TONS		3 TONS	
FUEL	NAT	LP	NAT	LP
BURNER ORIFICE	#42	#54	#42	#54
GAS SUPPLY PRESSURE (IN W.G.)				
MINIMUM REQUIRED	4.5	11	4.5	11
MAXIMUM ALLOWED	14	14	14	14
GAS MANIFOLD PRESSURE (IN W.G.)	3.5±0.3	10±0.3	3.5±0.3	10±0.3
NOMINAL TEMP. RISE	55°		65°	
VENT PIPE SIZE (IN.)	2" PVC		2" PVC	
CASING HEIGHT (IN.)	76 1/8"		76 1/8"	
CASING WIDTH (IN.)	18 3/4"		18 3/4"	
CASING DEPTH (IN.)	25 3/4"		25 3/4"	
APPROX. SHIPPING WEIGHT (LBS.)	195 LBS.		205 LBS.	
APPROVAL AGENCY	ETL		ETL	
SIZE OF PERM. FILTER	18" X 24"		18" X 24"	
ELECTRICAL REQUIREMENTS	115 VAC/ 60 HZ/ 1 PHASE		115 VAC/ 60 HZ/ 1 PHASE	
MAX FUSE SIZE	15 AMPS		15 AMPS	
TOTAL RATED CURRENT AMPS.	7.15		7.15	
SUPPLY AIR OUTLET SIZE (W-IN X D-IN)	12" X 12"		12" X 12"	
NOMINAL HEAT ANTICIPATOR SETTING	0.8mA		0.8mA	
	<b>ACCESSORY ITEMS</b>			
PROGRAMMABLE T-STAT STD/DELUXE	350164 / 350165		350164 / 350165	
CONCENTRIC VENT KIT	AOPS7483		AOPS7483	
DUAL PIPE FLASHING KIT	AOPS7484		AOPS7484	
BAYVENT SIDE WALL VENT KIT	370191		370191	
SLOPE ADAPTER 2-1/2 / 12	TSA-25		TSA-25	
SLOPE ADAPTER 3-1/2 / 12	TSA-30		TSA-30	
MINI CONDENSATE PUMP	350224		350224	
NEUTRALIZING KIT	320095		320095	
5" ROOF JACK ADAPTER	AOPS7500		AOPS7500	

1 OUTPUT BTUH BASED ON ANNUAL FUEL UTILIZATION EFFICIENCY RATED BY MANUFACTURER.

2 SEASONAL EFFICIENCY (ALSO CALLED AFUE-ANNUAL FUEL UTILIZATION EFFICIENCY) RATINGS ARE BASED ON TEST FOLLOWING U.S. DEPARTMENT OF ENERGY TEST PROCEDURES.

3 TO PERMIT LARGEST RECOMMENDED AIR CONDITIONING (AT .5 STATIC PRESSURE), SELECTION OF THE HIGHEST MOTOR SPEED IS REQUIRED.

**- SEE NEXT PAGE FOR MORE DATA -**

MODEL NUMBER DIGIT	1	2	3	4	5	6	7	8	9		10
	FUEL	MOBILE HOME	VERSION	VERSION		INPUT		BLOWER TYPE	CLG. AIRFLOW CAP.		GAS TYPE
GAS FURNACE MODEL NOMENCLATURE EXAMPLE MODEL NUMBERS	C	M	C	1	-	5	0	D	3	6	N
	C	M	C	1	-	7	5	D	V	3	N
C=CONDENSING	C										
M= MOBILE HOME		M									
VERSION			C								
VERSION				1							
					-						
INPUT IN MBTUH (1000'S)						7	5				
BLOWER TYPE D=DIRECT DRIVE								D			
CLG. AIRFLOW CAP. IN 1,000BTU; V=ECM, TONS									3	6	
N= NATURAL GAS L= LIQUID PROPANE											N

- SEE NEXT PAGE FOR MORE DATA -

**GAS FIRED CONDENSING MOBILE HOME FURNACE SPECIFICATIONS**

**CLEARANCES TO COMBUSTIBLES**

<b>MODELS: ALL MODELS</b>	<b>CLOSET</b>	<b>ALCOVE</b>
<b>FRONT</b>	6"	18"
<b>BACK</b>	0"	0"
<b>SIDES</b>	0"	0"
<b>VENT CONNECTOR (PVC)</b>	0"	0"
<b>TOP</b>	0"	0"
<b>PLENUM SIDES</b>	1"	1"
<b>TOP AND SIDES OF DUCT</b>	1"	1"
<b>BOTTOM DUCT</b>	1"	1"

**BLOWER DATA**

<b>FURNACE MODEL</b>	<b>CMC1-50</b>	<b>CMC1-75</b>
<b>BLOWER MODEL</b>	12-9T	12-9T
<b>MOTOR H.P.</b>	½ HP	½ HP
<b>NO. OF SPEEDS PSC/ECM</b>	4/5	4/5
<b>HIGH SPEED AIRFLOW (SCFM) @ 0.5 IN. W.G. EXTERNAL STATIC PRESSURE</b>	1162	1259
<b>DIAMETER X WIDTH</b>	12 X 9	12 X 9

- SEE NEXT PAGE FOR MORE DATA -

# GAS FIRED CONDENSING MOBILE HOME FURNACE SPECIFICATIONS

## CMC1-50D36

ALTERATIONS REQ'D FOR A/C @ DESIGN EXTERNAL STATIC PRESSURE		
COOLING UNIT	HTG Speed	Recommended CLG Speed
24,000	LOW	MED-LOW
30,000	LOW	MED-HIGH
36,000	LOW	HIGH

Speed Tap \ Static Pressure	Furnace Airflow (CFM) vs. External Static pressure (in. WC.)						
	0.1	0.2	0.3	0.4	0.5	0.6	0.7
<b>Low</b>	836	805	773	743	695	620	566
<b>ML</b>	1044	1010	972	914	860	826	752
<b>MH</b>	1250	1196	1146	1101	1038	977	902
<b>High</b>	1339	1338	1283	1233	1162	1086	1008

Speed Tap \ Static Pressure	Temperature Rise vs. External Static Pressure (in. WC.)						
	0.1	0.2	0.3	0.4	0.5	0.6	0.7
<b>Low</b>	53	55	57	59	63	71	78
<b>ML</b>	42	44	45	48	51	53	59
<b>MH</b>	35	37	38	40	42	45	49
<b>High</b>	31	33	34	36	38	41	44

Speed Tap \ Static Pressure	Blower Motor Current Draw (Amps) vs. External Static pressure (in. WC.)						
	0.1	0.2	0.3	0.4	0.5	0.6	0.7
<b>Low</b>	3.3	3.2	3.1	3.0	2.9	2.7	2.6
<b>ML</b>	4.0	3.8	3.6	3.5	3.4	3.2	3.1
<b>MH</b>	4.6	4.4	4.2	4.1	4.0	3.8	3.6
<b>High</b>	5.3	5.1	5.0	4.9	4.7	4.6	4.4

Speed Tap \ Static Pressure	Blower Motor Watts vs. External Static pressure (in. WC.)						
	0.1	0.2	0.3	0.4	0.5	0.6	0.7
<b>Low</b>	315	311	304	300	292	281	275
<b>ML</b>	400	390	376	363	351	342	330
<b>MH</b>	485	467	452	441	427	412	394
<b>High</b>	573	555	544	530	513	493	477

= Recommended operation range

- SEE NEXT PAGE FOR MORE DATA -

# GAS FIRED CONDENSING MOBILE HOME FURNACE SPECIFICATIONS

## CMC1-75D36

ALTERATIONS REQ'D FOR A/C @ DESIGN EXTERNAL STATIC PRESSURE		
COOLING UNIT	HTG Speed	Recommended CLG Speed
24,000	MED-LOW	MED-LOW
30,000	MED-LOW	MED-HIGH
36,000	MED-LOW	HIGH

Speed Tap \ Static Pressure	Furnace Airflow (CFM) vs. External Static pressure (in. WC.)						
	0.1	0.2	0.3	0.4	0.5	0.6	0.7
<b>Low</b>	817	797	773	730	668	620	555
<b>ML</b>	1019	995	959	918	869	821	760
<b>MH</b>	1257	1210	1174	1125	1076	1024	959
<b>High</b>	1470	1420	1366	1312	1259	1196	1127

Speed Tap \ Static Pressure	Temperature Rise vs. External Static Pressure (in. WC.)						
	0.1	0.2	0.3	0.4	0.5	0.6	0.7
<b>Low</b>	81	83	85	90	90	106	119
<b>ML</b>	65	66	69	72	76	80	87
<b>MH</b>	52	55	56	59	61	64	69
<b>High</b>	45	46	48	50	52	55	59

Speed Tap \ Static Pressure	Blower Motor Current Draw (Amps) vs. External Static pressure (in. WC.)						
	0.1	0.2	0.3	0.4	0.5	0.6	0.7
<b>Low</b>	3.1	3.0	2.9	2.8	2.7	2.6	2.5
<b>ML</b>	3.9	3.8	3.6	3.5	3.3	3.2	3.1
<b>MH</b>	4.8	4.6	4.4	4.2	4.1	4.0	3.8
<b>High</b>	5.7	5.5	5.4	5.2	5.1	5.0	4.8

Speed Tap \ Static Pressure	Blower Motor Watts vs. External Static pressure (in. WC.)						
	0.1	0.2	0.3	0.4	0.5	0.6	0.7
<b>Low</b>	312	303	298	291	280	273	264
<b>ML</b>	400	390	381	366	354	342	330
<b>MH</b>	513	490	478	462	447	432	413
<b>High</b>	624	605	591	573	556	542	522

= Recommended operation range

- SEE NEXT PAGE FOR MORE DATA -

## CMC1-50DV3

ALTERATIONS REQ'D FOR A/C @ DESIGN EXTERNAL STATIC PRESSURE		
COOLING UNIT	HTG Speed	Recommended CLG Speed
24,000	LOW	MED-LOW
30,000	LOW	MED-HIGH
36,000	LOW	HIGH

Speed Tap \ Static Pressure	Furnace Airflow (CFM) vs. External Static pressure (in. WC.)						
	0.1	0.2	0.3	0.4	0.5	0.6	0.7
Low	700	639	567	497	437	387	332
ML	876	834	781	725	653	602	556
MED	990	948	907	857	811	756	700
MH	1174	1145	1107	1066	1026	987	942
High	1398	1365	1326	1299	1265	1252	1190

Speed Tap \ Static Pressure	Temperature Rise vs. External Static Pressure (in. WC.)						
	0.1	0.2	0.3	0.4	0.5	0.6	0.7
Low	63	69	78	88	101	114	132
ML	50	53	56	61	67	73	79
MED	44	46	48	51	54	58	63
MH	37	38	40	41	43	45	47
High	31	32	33	34	35	35	37

Speed Tap \ Static Pressure	Blower Motor Current Draw (Amps) vs. External Static pressure (in. WC.)						
	0.1	0.2	0.3	0.4	0.5	0.6	0.7
Low	1.1	1.1	1.2	1.2	1.2	1.3	1.4
ML	1.7	1.7	1.8	1.8	1.9	1.9	2.0
MED	2.2	2.2	2.3	2.4	2.5	2.5	2.5
MH	3.4	3.4	3.4	3.5	3.6	3.6	3.7
High	5.2	5.2	5.2	5.3	5.3	5.4	5.5

Speed Tap \ Static Pressure	Blower Motor Watts vs. External Static pressure (in. WC.)						
	0.1	0.2	0.3	0.4	0.5	0.6	0.7
Low	72	77	81	84	87	91	95
ML	123	127	133	137	141	145	148
MED	168	173	178	183	188	192	197
MH	266	272	277	284	290	296	301
High	438	442	445	450	455	461	468

= Recommended operation range

- SEE NEXT PAGE FOR MORE DATA -

# GAS FIRED CONDENSING MOBILE HOME FURNACE SPECIFICATIONS

## CMC1-75DV3

ALTERATIONS REQ'D FOR A/C @ DESIGN EXTERNAL STATIC PRESSURE		
COOLING UNIT	HTG Speed	Recommended CLG Speed
24,000	MED-LOW	MED-LOW
30,000	MED-LOW	MED-HIGH
36,000	MED-LOW	HIGH

Speed Tap \ Static Pressure	Furnace Airflow (CFM) vs. External Static pressure (in. WC.)						
	0.1	0.2	0.3	0.4	0.5	0.6	0.7
<b>Low</b>	970	935	898	846	802	765	710
<b>ML</b>	1043	998	968	928	880	830	785
<b>MED</b>	1148	1113	1080	1051	1007	968	929
<b>MH</b>	1212	1177	1142	1119	1083	1047	1023
<b>High</b>	1300	1272	1229	1211	1177	1144	1117

Speed Tap \ Static Pressure	Temperature Rise vs. External Static Pressure (in. WC.)						
	0.1	0.2	0.3	0.4	0.5	0.6	0.7
<b>Low</b>	75	78	81	86	91	96	103
<b>ML</b>	70	73	76	79	83	88	93
<b>MED</b>	64	66	68	70	73	76	79
<b>MH</b>	60	62	64	65	67	70	71
<b>High</b>	56	57	59	60	62	64	65

Speed Tap \ Static Pressure	Blower Motor Current Draw (Amps) vs. External Static pressure (in. WC.)						
	0.1	0.2	0.3	0.4	0.5	0.6	0.7
<b>Low</b>	2.4	2.5	2.5	2.6	2.6	2.7	2.7
<b>ML</b>	2.8	2.9	3.0	3.0	3.1	3.1	3.2
<b>MED</b>	3.6	3.7	3.7	3.8	3.8	3.9	3.9
<b>MH</b>	4.2	4.2	4.3	4.3	4.4	4.5	4.5
<b>High</b>	4.8	4.9	5.0	5.0	5.1	5.2	5.2

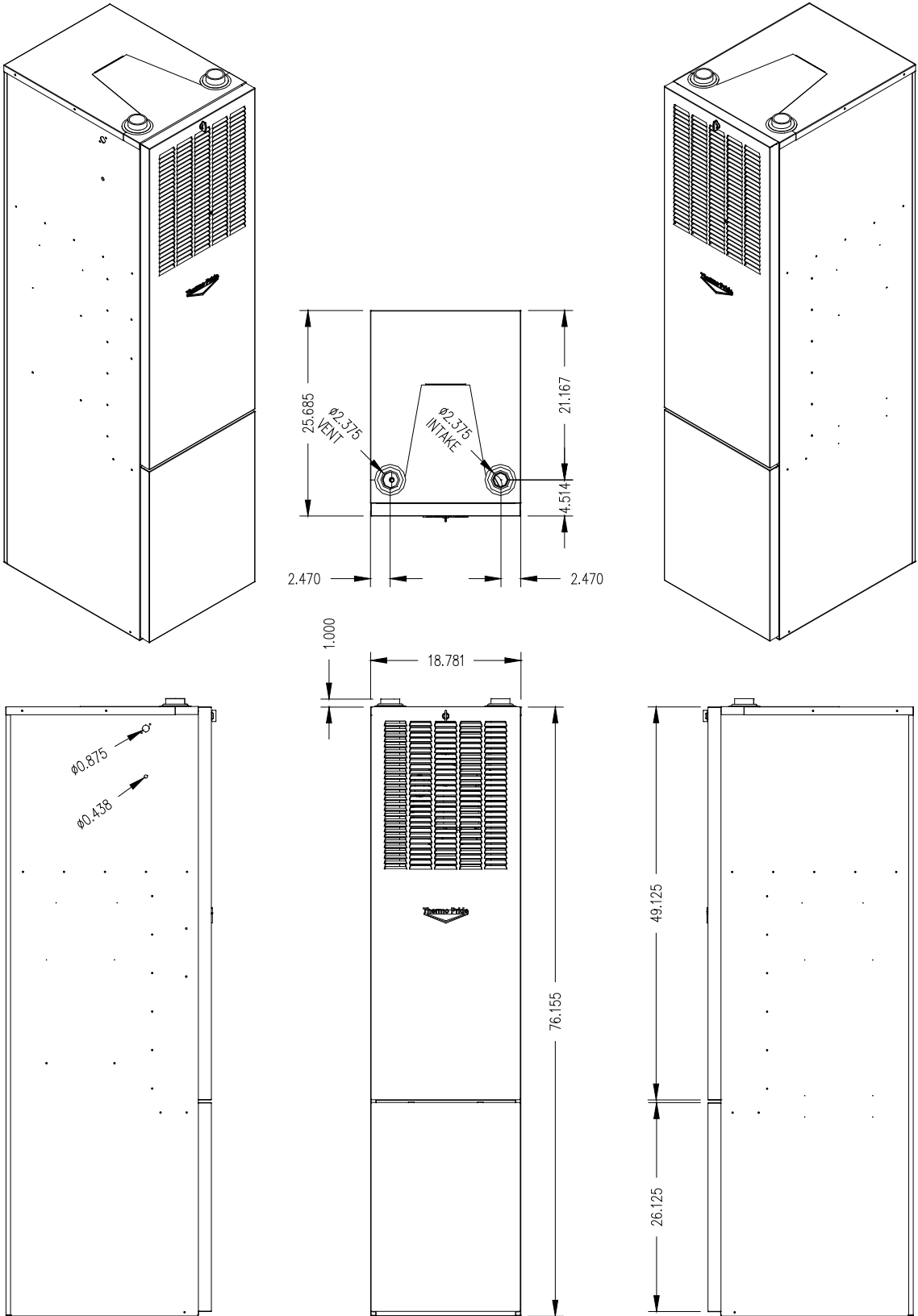
Speed Tap \ Static Pressure	Blower Motor Watts vs. External Static pressure (in. WC.)						
	0.1	0.2	0.3	0.4	0.5	0.6	0.7
<b>Low</b>	187	190	195	200	204	206	211
<b>ML</b>	225	229	233	238	244	248	252
<b>MED</b>	290	295	299	303	310	315	320
<b>MH</b>	341	347	353	356	364	369	371
<b>High</b>	408	414	423	428	435	441	445



= Recommended operation range

- SEE NEXT PAGE FOR MORE DATA -

# GAS FIRED CONDENSING MOBILE HOME FURNACE SPECIFICATIONS CMC1

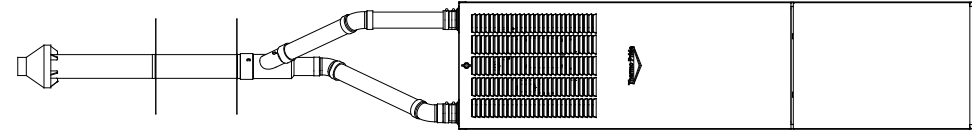
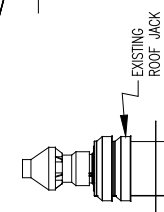
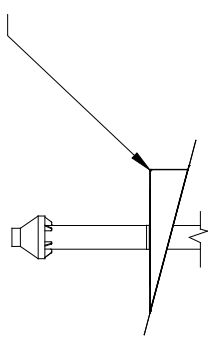




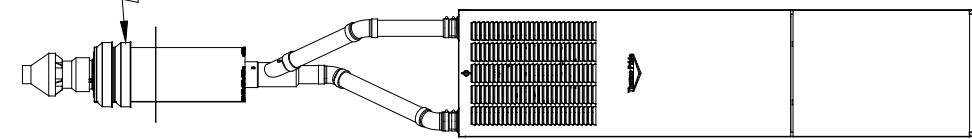
# GAS FIRED CONDENSING MOBILE HOME FURNACE SPECIFICATIONS VENT OPTIONS

SLOPE ADAPTER  
 USE WITH VERTICAL CONCENTRIC OR DUAL PIPE  
 INSTALLATION ON PITCHED ROOF.

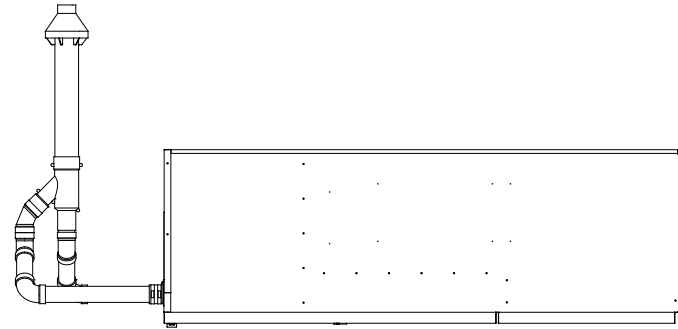
MODEL# ROOF PITCH  
 TSA-25 2-1/2 / 12  
 TSA-30 3-1/2 / 12



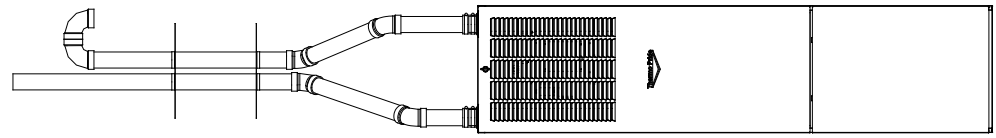
(VERTICAL)



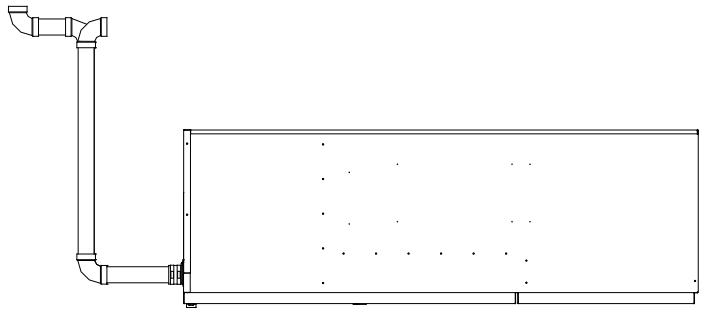
(ROOF JACK RETROFIT)



(HORIZONTAL)



(VERTICAL DUAL PIPE)



(HORIZONTAL DUAL PIPE)

FIELD SUPPLIED COMPONENTS

DUAL PIPE FLASHING KIT# AOPST484

CONCENTRIC VENT KIT# AOPST483