



**Hercules**  
INDUSTRIES

COMMERCIAL FABRICATION DIVISION

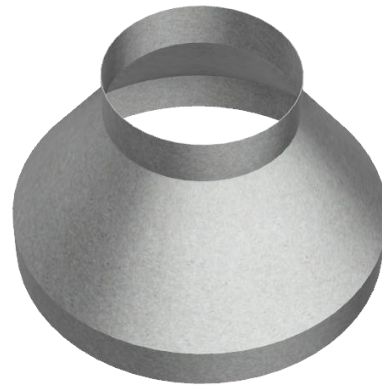
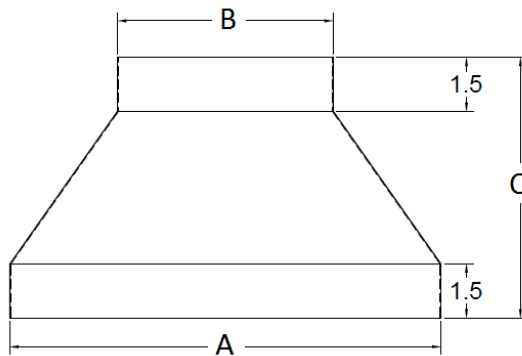
[www.herculesIndustries.com](http://www.herculesIndustries.com)

1310 W. Evans Ave. Denver, Colorado 80223

Tel. 303 937-1000 Fax. 303 937-0903

Toll Free. 1 800 356-5350

# Tapered Reducers



ITEM	A	B	C
43TR	4	3	5.75
53TR	5	3	6.75
54TR	5	4	6.75
63TR	6	3	7.25
64TR	6	4	6.75
65TR	6	5	7.25
74TR	7	4	7.25
75TR	7	5	6.75
76TR	7	6	6.75
85TR	8	5	7.25
86TR	8	6	6.75
87TR	8	7	6.75
96TR	9	6	7.25
97TR	9	7	7
98TR	9	8	6.25
106TR	10	6	6.75
107TR	10	7	7.25
108TR	10	8	7

ITEM	A	B	C
109TR	10	9	6.75
127TR	12	7	7.5
129TR	12	9	7.25
1210TR	12	10	6.75
126TR	12	6	7.25
128TR	12	8	7.25
1410TR	14	10	6.75
1412TR	14	12	7
148TR	14	8	8
1610TR	16	10	7.25
1612TR	16	12	7.5
1614TR	16	14	7
1812TR	18	12	8
1814TR	18	14	7
1816TR	18	16	6.75
2014TR	20	14	8
2016TR	20	16	7
2018TR	20	18	6.75

\* All dimensions in inches  $\pm$  0.125

- Tapered Reducers constructed of **26Ga.** Galvanized Steel **ASTM-A653-00**
- All gauges and reinforcements are in compliance with 2005 SMACNA standards for duct fabrication

